

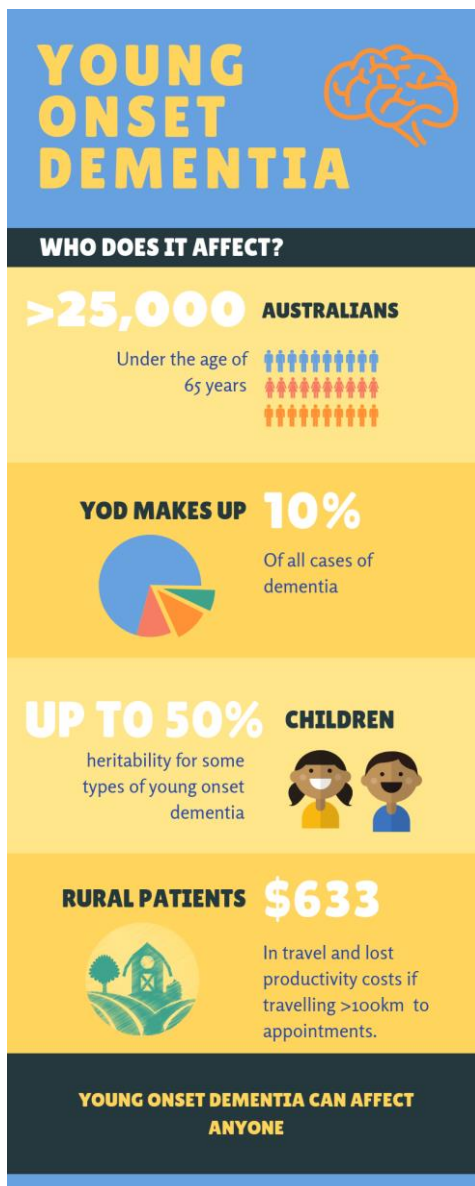


BRIGHT-YOD: Bridging Gaps in Health using Telepsychiatry for Young Onset Dementia

Dr Sarah Farrand & Dr Wendy Kelso
Neuropsychiatry Unit
Royal Melbourne Hospital



The Neuropsychiatry Unit



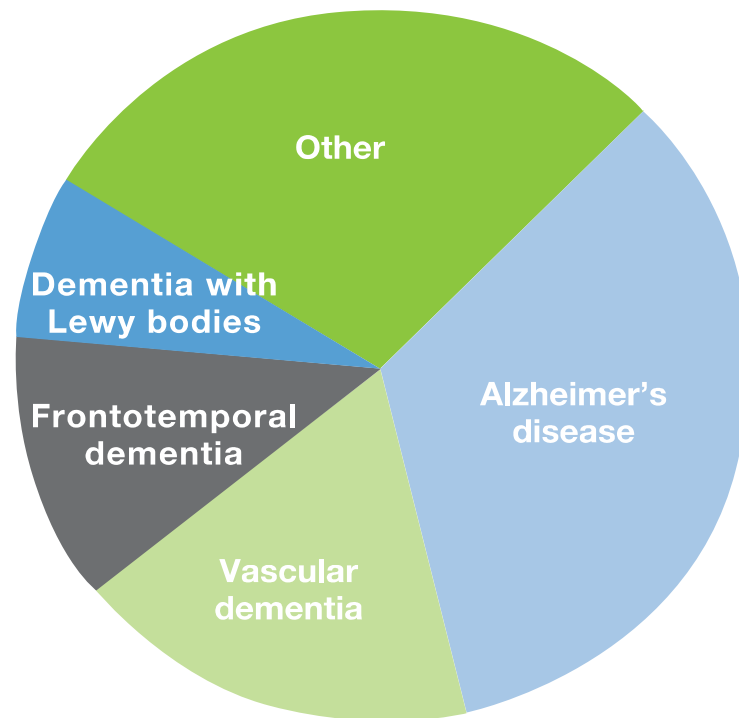
- Statewide specialist inpatient and outpatient unit
- Neuropsychiatry, Neurology, OT, SW SP, Neuropsychology, Nursing, Art Therapy
- Approx 100 inpatients per year, 750 outpatient appointments, 350 unique outpatient
- Our work:
 - Young onset dementia (~50-70%)
 - Complex psychiatric disorders
 - Movement disorders
 - Organic psychiatry
 - Deep Brain Stimulation





What is Young Onset Dementia?

- Onset of symptoms of Dementia before age of 65 years
- Occurs in approximately 10% of dementia cases
- Commonly misdiagnosed
- Commonly associated with psychiatric symptoms



Causes of younger onset dementia





Why is Young Onset Dementia Unique?

- Affects people in middle age
- Unexpected
- Still working
- Financial loss: income
- Dependent children
- Grief and loss: hopes/expectations
- Future uncertain - life turned upside down





Why is Young Onset Dementia Unique?

- Productively engaged in work/family life/community/social life
- A peak of career and earning capacity
- Dementia may erode self-confidence/sense of identity
- Depression: due to loss of skills/income/mastery
- Social isolation: feel abandoned and misunderstood
- Genetic burden



PATHWAYS TO DIAGNOSIS

Y O U N G O N S E T D E M E N T I A



Effects approximately 6000-8000 Victorian's, with only a fraction of these receiving specialised care.

"It was hard to convince the doctors that anything was wrong...due to their age"



5



The average number of specialists seen preceding referral to the Neuropsychiatry Unit

These patients wait on average 3 years to receive a diagnosis

3



"The journey is very long and traumatic"

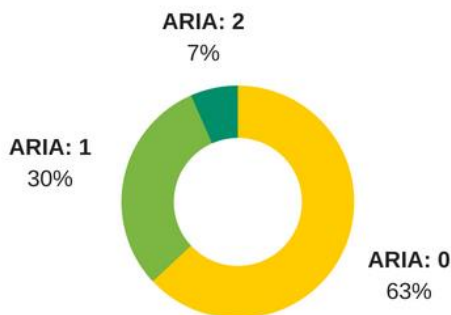


751

Outpatient appointments were offered to 350 unique patients in 2017-2018

Only 25 appointments were conducted via telehealth

3%



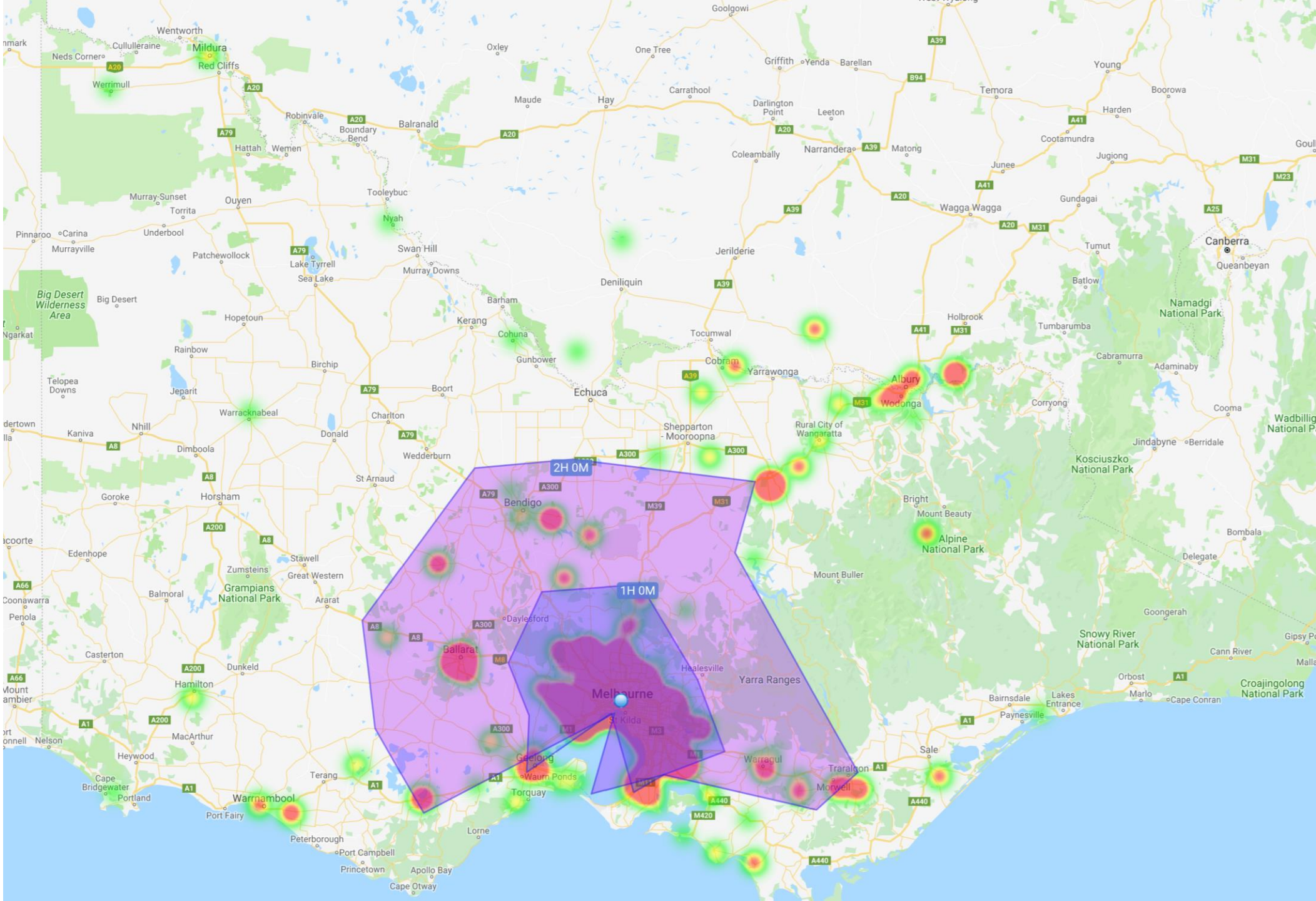
130 patients were from inner and outer regional areas, making up 276 outpatient appointments.

The average one way distance for these patients

150-180km

"Young onset dementia is one of the cruelist things I have ever experienced, for the patient and their family members."







BRIGHT-YOD is an innovative telehealth project designed to improve access to diagnosis and care for those with possible young-onset dementia, whilst reducing costs associated with accessing specialist clinics.



Project Team



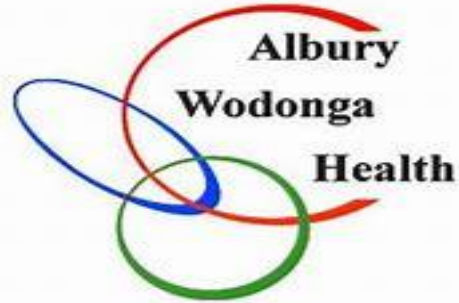
- Project Lead: Professor Dennis Velakoulis
- Clinical Lead – Neuropsychiatrist: Dr Sarah Farrand
- Clinical Lead – Neuropsychologist: Dr Wendy Kelso
- Project Manager: Stefanie Colella
- Administration Officer: Mel Sorraghan



Project Partners



- Albury Wodonga Health
- Ballarat Health Services
- Royal Park CDAMS
- Goulburn Valley Health
- Dementia Australia
- Huntington's Victoria



MELBOURNE HEALTH



GV Health



Ballarat **Health** Services
Putting your health first®



huntington's
victoria



BRIGHT-YOD



NorthWestern Mental Health



MYOD
Melbourne Young Onset Dementia Service



INNOVATION FUND PROJECT
BETTER
CARE
VICTORIA



What can we offer via telehealth?

- Neuropsychiatric Assessment
- Neuropsychological Assessment
- Primary or Secondary Consultations
- Second Opinions
- Attendance at Multidisciplinary meetings
- Educational Seminars
- Involvement in GP consults
- Support for the Person with Dementia/Family
- Video Interpreting available





Unmet need

Referral outcomes

DNA outcomes

No of specialists

Diagnostic Delay

Cost

Km saved

Co2 emissions saved

Productivity & Opportunity cost

Capability Building

Delivered sessions

Knowledge of YOD pre- and post

Reaction to seminars

Patient/Carer Burden

DASS21

EQ5D5L

WHOQOL

Zarit Burden

Health Economics

Cost-effectiveness analysis

Incremental Cost-Effective Ratio

So far...

- Focus group
- 13 patients seen as part of pilot implementation
- Go live date 1st April, for 12 months
- So far >7600km saved for patients
- >1.9 Tonnes of Co2 emissions saved





Questions and Contacts

- Find us on twitter:
 - @NWMentalHealth and @melb_neuropsych
- Referrals:
 - Referral form can be found on website www.neuropsychiatry.org.au
 - Send with referral information to NPUReferrals@mh.org.au or Fax to (03) 9342 8750
- Contact sarah.farrand2@mh.org.au and wendy.kelso@mh.org.au for any enquiries

